



NOVA SERIES

# MCT460

**NEAR INFRARED (NIR) TRANSMITTER**

The First and Best Choice for Near Infrared (NIR) Measurement

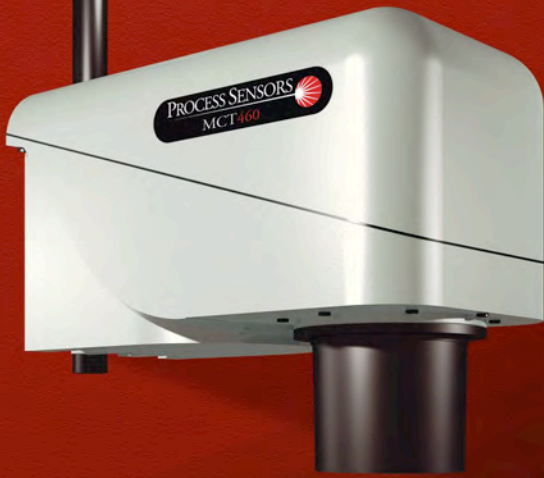
PROCESS SENSORS  
CORPORATION 

Distributed  
in the UK by



t: +44 (0)1943 878 877 | e: [info@ima.co.uk](mailto:info@ima.co.uk) | w: [www.ima.co.uk](http://www.ima.co.uk)

IMA Ltd | Parkwell House | Otley Road | Guiseley | West Yorkshire | LS20 8BH | United Kingdom

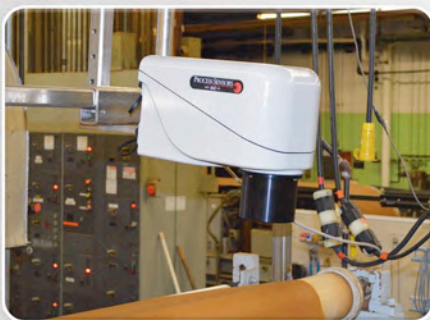


# NOVA SERIES MCT460

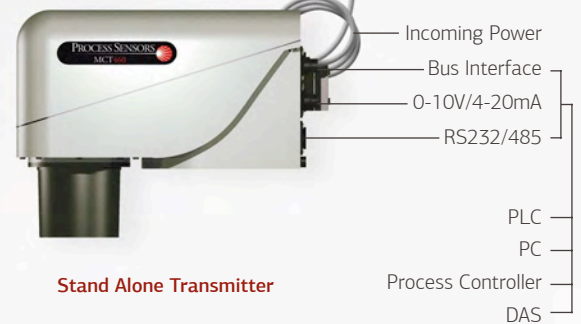
Near Infrared (NIR) Transmitter

## MCT460 Stand Alone Configuration

- Connects directly to PLC
- No Operator Interface required
- Powered at the MCT460 Transmitter
- All Analog Outputs, Digital and Bus interfaces directly from the Transmitter
- 5.7" Operator Interface/Display (optional)



**Operator Interface**  
Color Touch Screen  
(Optional)



**Stand Alone Transmitter**

## MCT460 System Configuration

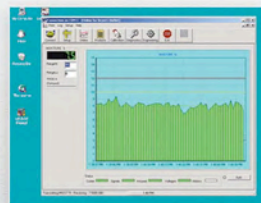
- Transmitter connects to Operator Interface
- Transmitter powered from Operator Interface
- All Analog Outputs, Digital and Bus interfaces from Operator Interface
- Large 5.7" high resolution Touchscreen

**Operator Interface**  
Color Touch Screen



**System Transmitter**

## Computer Software



Process Sensors Corporation (PSC) Viewer Software is a proprietary Windows-based package. It monitors all MCT460 functions and allows an operator to insert set-up parameters, perform or adjust calibrations, select product codes, examine internal diagnostic values and view trends of moisture and temperature.

Distributed  
in the UK by



t: +44 (0)1943 878 877 | e: info@ima.co.uk | w: www.ima.co.uk

IMA Ltd | Parkwell House | Otley Road | Guiseley | West Yorkshire | LS20 8BH | United Kingdom

## Nova Series

### A Reliable, Rugged and Accurate Transmitter

Each **MCT460** measurement produces analog and digital outputs for control. Bus Interfaces, such as Ethernet, Modbus, Profibus, etc are also available.

The MCT460 is made up of 5 basic components: a quartz halogen lamp, a filter wheel motor, multiple NIR interference filters in a rotating filter wheel assembly, a Lead Sulfide detector and a single "smart" circuit board. The MCT460 is fully modular – each of these components can be replaced in the field within minutes.

#### The Near Infrared (NIR) Operating Principle

Light from the lamp is directed through the rotating, narrow band-pass NIR filters. The filters separate the light into NIR wavelengths, selected specifically by PSC for the measurement and application being performed. The NIR light is then directed onto the product being measured, normally on a conveyor belt or moving web.

Subsequently, the light reflected off of the product is captured by a mirror and focused onto a Lead sulfide detector. The detector's microvolt output is then taken by the on-board "smart" circuit board and converted into percent moisture or other engineering units.

### MCT460 Features & Improvements

- New micro controller, high performance, dual core architecture. One core dedicated to NIR signal acquisition, the other programmed to manage computations and communications options
- Samples entire NIR signal train for increased measurement accuracy
- Embedded bootloader allows sensor firmware to be upgraded through USB or serial interface
- Filter wheel speed adjustment through software
- Temperature controlled PbS detector for enhanced stability
- Built in cooling panel and Air Purge Assembly
- Ergonomically sound IP67 cast aluminum enclosure

#### Typical constituents include:

**O-H** for Moisture & Alcohol

**C-H** for Oils, Fats, Adhesives & Plastics

**N-H** for Proteins, Ammonia & Amines

#### Typical applications include:

##### Wood Products

- Particle board
- Fiberboard
- Hardboard
- Hog Fuels
- Medium Density Fiberboard
- Oriented Strandboard

##### Food Products

- Snack Foods
- Pet Foods
- Coffee
- Starches
- Cereals
- Soy Bean & Corn Meals
- Milk powders
- Cookies & Crackers

##### Tobacco Products

- Whole Leaf
- Lamina Strips
- Stems
- Cut
- Reconstituted
- Expanded
- Chewing Tobacco

##### Paper Converting

- Moisture & Coatweights
- Re-moisturizing
- Hot Melts
- Extruded Plastics
- Pressure Sensitive Adhesives
- Carbonless Coatings
- PVB Films

##### Chemicals & Minerals

- Crumb Rubber
- PVC Powders
- Ceramics
- Fertilizers
- Plastic Chips
- Detergents
- Soaps
- Ores

## NOVA SERIES

# MCT460 NEAR INFRARED (NIR) TRANSMITTER

### The Innovative New NOVA Series

The **MCT460** can be configured to perform up to three NIR measurements. The MCT460 provides accurate, reliable and stable outputs for measurement and control. The MCT460 can also provide a product temperature measurement. Simple to install and virtually maintenance free.

#### Specifications: MCT460 NIR Transmitter

Measured NIR Constituents: \_\_\_\_\_ 1, 2 or 3 simultaneously  
Moisture Range: \_\_\_\_\_ Min. 0.1%, Max. 95%  
Coatings Range: \_\_\_\_\_ Min. 0.1 gr./m, Max. 200 gr./m  
Fats/Oils: \_\_\_\_\_ Min. 0.1%, Max. 50%  
Accuracy: (subject to application and product type)  
Moisture \_\_\_\_\_ +/- 0.1%  
Coatings \_\_\_\_\_ +/- 0.1 gr./m  
Fats/Oils: \_\_\_\_\_ +/- 0.2%  
Repeatability: \_\_\_\_\_ +/- 0.2%  
Product Distance: \_\_\_\_\_ 8-18 inches (200-450mm)  
Calibration Codes: \_\_\_\_\_ 100  
Response Time: \_\_\_\_\_ 1-999 seconds. Three modes available  
Damping, integration and gated.  
Power: \_\_\_\_\_ 90-260VAC, 50/60 Hz, 40 watts  
Outputs: \_\_\_\_\_ 4-20mA, 0-10V (isolated), RS-232 & RS485  
Weight/Enclosure: \_\_\_\_\_ 19 lbs. (8.6kg)/IP67, Cast Aluminum  
Ambient Temperature: \_\_\_\_\_ 0-50 °C (32-120 °F) with water  
or air cooling up to 80°C (160°F)  
Window Purge: \_\_\_\_\_ Airpurge Diffuser

#### Specifications: Operator Interface

Display: \_\_\_\_\_ 5.7 inch Color Touchscreen LCD  
Languages: \_\_\_\_\_ User Selectable  
Power: \_\_\_\_\_ From MCT460 Sensor or Local  
Cable: \_\_\_\_\_ 10 ft (3 meters) standard  
Enclosure: \_\_\_\_\_ Cast Aluminum

#### Maintenance:

Warranty: \_\_\_\_\_ 24 months Parts/Labor  
Routine Cleaning: \_\_\_\_\_ None Required  
Calibration Verification: \_\_\_\_\_ Calibration Check Standard  
Cooling: \_\_\_\_\_ Vortex Air Cooler (optional)

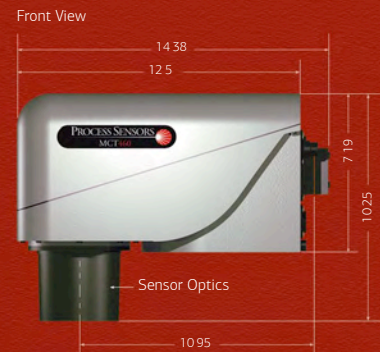
#### CE Compliance:

EMC Directives EN50081-1 & EN50082-2, EN61010-1  
Low Voltage Directive

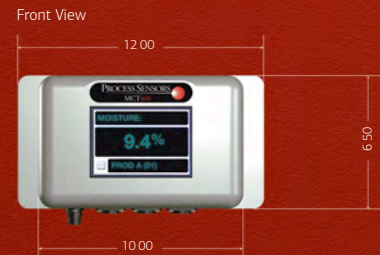
#### Databus & Software Interfaces:

Optional Bus Interfaces: \_\_\_\_\_ ProfiNet, ProfiBus, Ethernet IP  
Modbus TCP, DeviceNet  
Software: \_\_\_\_\_ Window-based Stand-alone Program  
or OPC-DDE Server

#### Dimensions: MCT460



#### Operator Interface



#### HEADQUARTERS

##### United States

Process Sensors Corporation  
113 Cedar St.  
Milford, MA 01757 USA  
Tel: (508) 473-9901  
Fax: (508) 473-0715  
info@processsensors.com

##### Europe

Process Sensors Europe  
Unit 4, Adelaide House  
Corbygate Business Park  
Corby, Northants NN17 5JG UK  
Tel: 01536 408066  
Fax: 01536 407813  
infouk@processsensors.com

##### Eastern Europe

Process Sensors Polska  
ul. Erazma z Zakroczymia 12 lokal 2  
03-185 Warszawa  
Tel: (48) 22 6739526  
Fax: (48) 22 6739527  
Gsm: (48) 509 202759  
tomasz@processsensors.com

##### ASIA - Process Sensors Asia

PT 2328 Pinggiran Golf  
Kemumin, Pengkalan Chepa  
Kota Bharu, Kelantan 16100  
Malaysia  
T: 011 60 17620-2806  
Fx: 011 60 6601 4588  
hussin@processsensors.com

Distributed  
in the UK by



t: +44 (0)1943 878 877 | e: info@ima.co.uk | w: www.ima.co.uk

IMA Ltd | Parkwell House | Otley Road | Guiseley | West Yorkshire | LS20 8BH | UK

PROCESS SENSORS  
CORPORATION

